

DILE

neo+





Neo+

NEO+ garantiza altas prestaciones en confort en largas jornadas de trabajo gracias a su sistema de tapizado con espuma de poliuretano de alta densidad. NEO+ es más: el resultado de una mejora sustancial en la ergonomía de su respaldo.





Sillón alto | S0000-00bb-00yy

Referencia	Base	Ruedas	Brazos	Mecanismo
S0600	aluminio	romo/goma	romo tapizado	sincro
S0602	aluminio	romo/goma	aluminio regulable 4D	sincro
S0603	aluminio	romo/goma		sincro
S0604	nylon	nylon/goma	nylon regulable 4D	sincro
S0605	nylon	nylon/goma		sincro

Unidades: 1 / Peso (Kg.): 24 / Volumen (m3): 0,26



Sillón bajo | S0000-00bb-00yy

Referencia	Base	Ruedas	Brazos	Mecanismo
S0611	aluminio	romo/goma	romo tapizado	sincro
S0612	aluminio	romo/goma	aluminio regulable 4D	sincro
S0613	aluminio	romo/goma		sincro
S0614	nylon	nylon/goma	nylon regulable 4D	sincro
S0615	nylon	nylon/goma		sincro

Unidades: 1 / Peso (Kg.): 22 / Volumen (m3): 0,21



Confidente | S0000-00bb-00yy

Referencia	Patín	Brazos
S0620	romo	poliuretano

Unidades: 1 / Peso (Kg.): 16 / Volumen (m3): 0,25

Unidades: 2 / Peso (Kg.): 33 / Volumen (m3): 0,32

TELA CLIENTE	(bb = Grupo tapizado 02)	
	Sillón alto	Sillón bajo
Piel	2,50 m2	2,20 m2
Tejido	180 cm	150 cm

neo+



FICHA TECNICA BÁSICA NEO+

Características:

Neo+ es minimalismo y pureza de líneas. Neo+ expresa vanguardia y tecnología a través de sus materiales y su construcción única. Neo+ garantiza altas prestaciones en confort en largas jornadas de trabajo gracias a su sistema de tapizado con espuma de poliuretano de alta densidad. Neo+ es más, el resultado de una mejora sustancial en la ergonomía de su respaldo. La colección Neo+, inspirada en la pureza de la línea recta, y compuesta de sillón alto, bajo y confidente, es la mejor opción para configurar espacios serenos y modernos.

Resumen materiales sillón alto y bajo:

Respaldo: Interior fabricado mediante estructura de tubo de acero recubierta de espuma ignífuga de poliuretano expandido de alta densidad de 60 kg/m³.

Asiento: Interior fabricado mediante madera contrachapada de haya, recubierta de espuma ignífuga de poliuretano expandido de alta densidad de 60 kg/m³.

Mecanismo: Sincro de 4 posiciones.

Brazos (Opcionales):

- Fijos de acero cromado con apoyabrazos tapizado.
- 4D con estructura interna en aluminio pulido o nylon, según base, y exterior en poliamida. Apoyabrazos de poliuretano. Regulables en altura y anchura. Rotación del apoyabrazos y regulables en profundidad.

Columna de gas: Elevación mediante columna de gas cromada o negra según base.

Bases: De aluminio pulido de 70 cm o nylon de 69 cm de diámetro.

Ruedas: Dobles engomadas en Desmopán de 65 mm de diámetro con embellecedor cromado o negro según base.

Opcional: Tapones antideslizantes de acero cromado o nylon negro, según base.

Resumen materiales confidente:

Respaldo: Idem que sillón alto y bajo.

Asiento: Idem que sillón alto y bajo.

Estructura: Tubo de acero cromado de sección cuadrada de 15 mm de lado con brazos fijos.

Resumen tapizados:

Pespunte al tono con doble costura.

Tejido: ver ficha técnica de tapizados.

Tejido pegado con adhesivo al agua libre de disolventes (polímero base de policloropreno con resinas).

Listado de certificados y normativas:

UNE EN 1335:01 parte 2

UNE EN 1335:01 parte 3 apdo 6.1

UNE EN 1335:01 parte 3 apdo 6.2

UNE EN 1335:01 parte 3 apdo 7

UNE EN 1335:01 parte 3 apdo 9.1

UNE EN 1335:01 parte 3 apdo 9.2.1

UNE EN 1335:01 parte 3 apdo 9.2.2

UNE EN 1021-2/06 BS-5852/06

EN ISO 845

MQ cert. 07-175

BS 5852/10

UNI 9084/02

ANSI BIFMA X5.1-2002/7

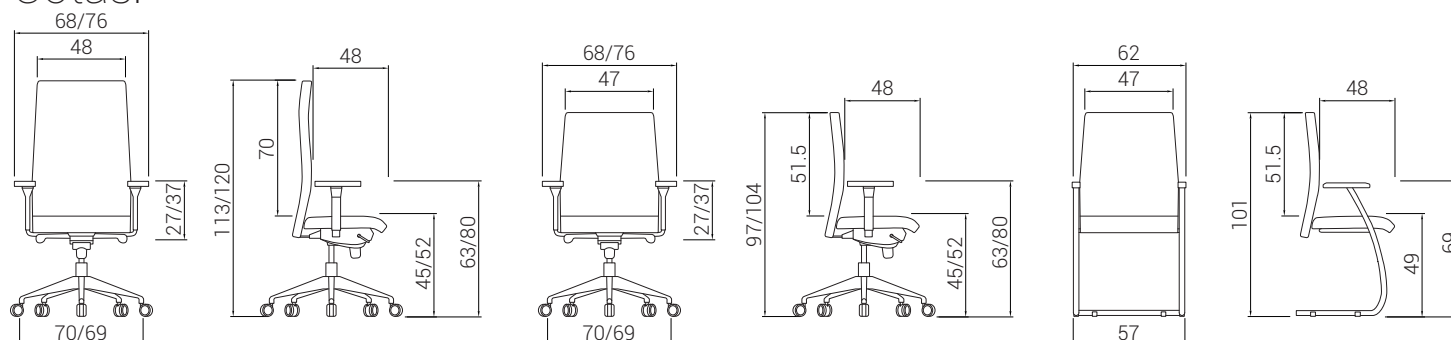
ANSI-BIFMA X5.1-1993/18

ANSI-BIFMA X5.1-2011/17

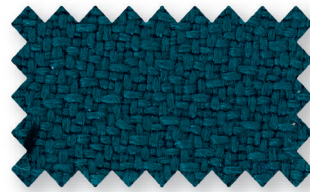
EN 1335 9.1

EN 1335 9.2.1

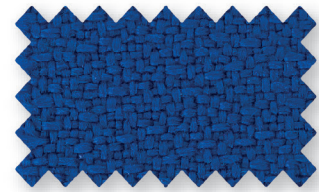
Cotas:



Tapizados / Grupo 1 / Bali



P5



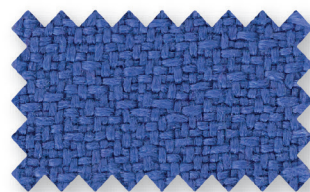
P6



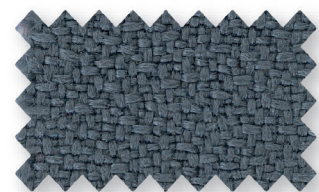
P7



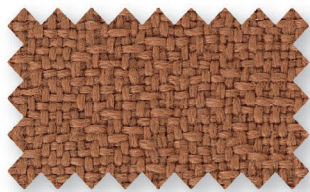
P8



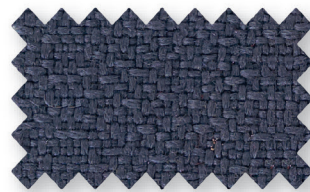
P16



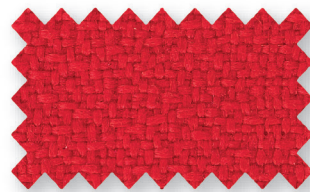
P17



P19



P20



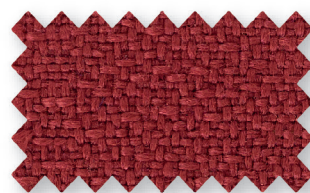
P21



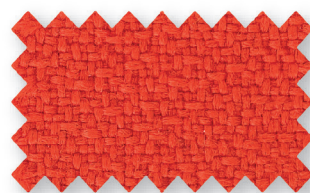
P22



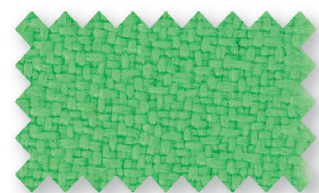
P23



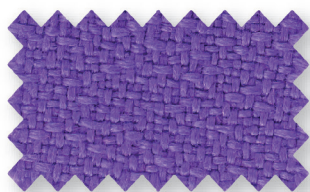
P24



P28



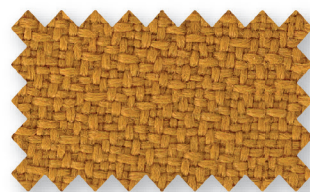
P29



P30



P31



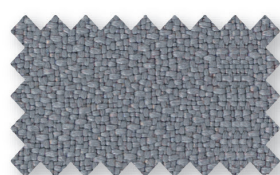
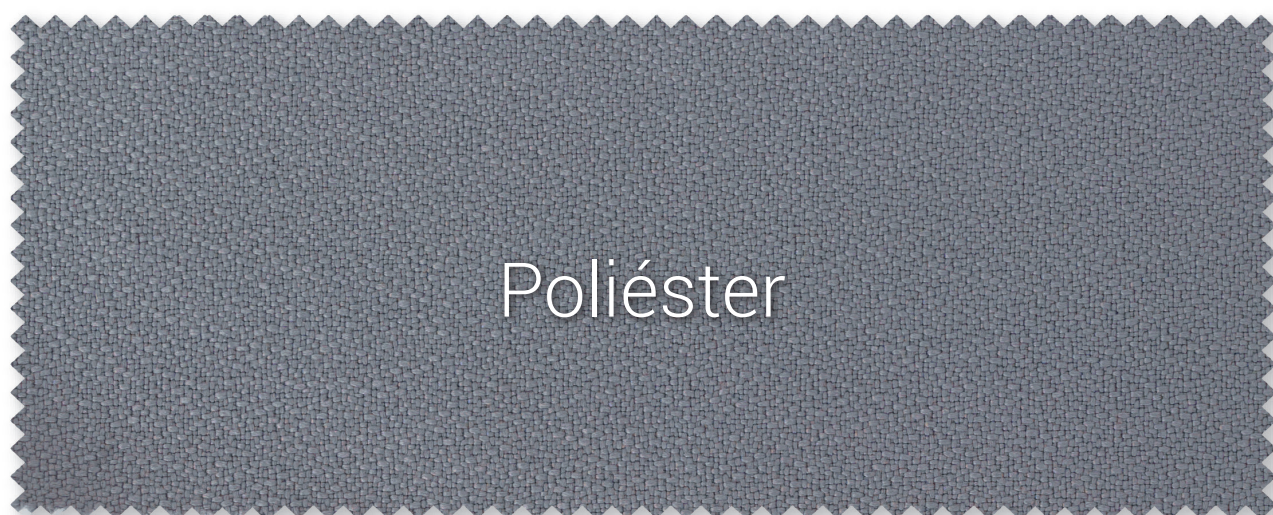
P32



P33

muestrarios

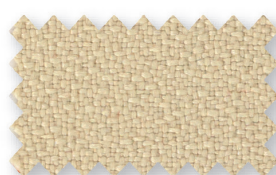
Tapizados / Grupo 1 / Poliéster



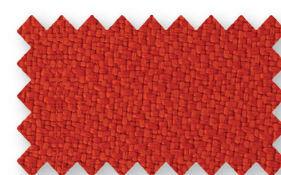
C1



C2



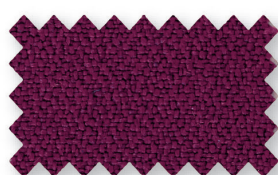
C3



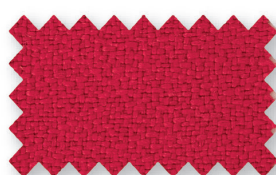
C4



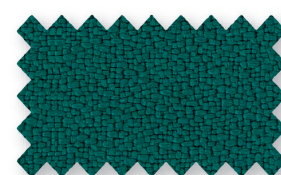
C5



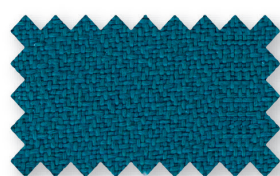
C6



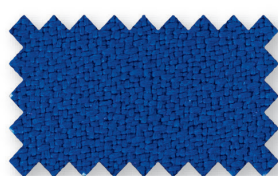
C7



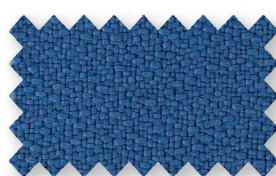
C8



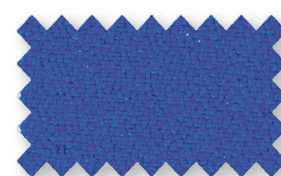
C9



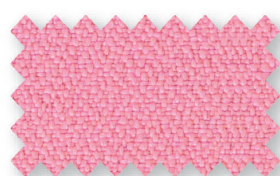
C10



C11



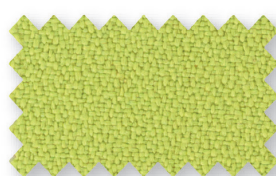
C12



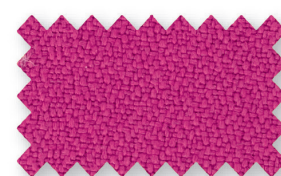
C13



C14

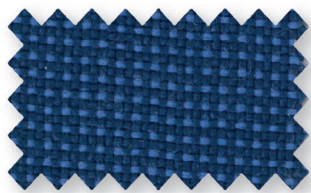


C16

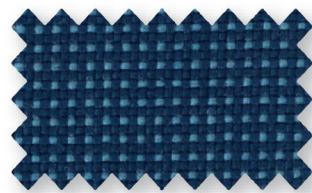


C17

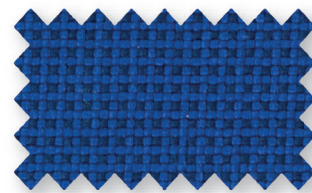
Tapizados / Grupo 1 / Goya



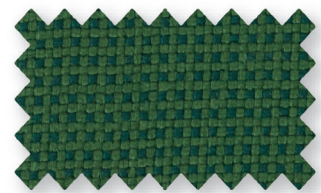
D1



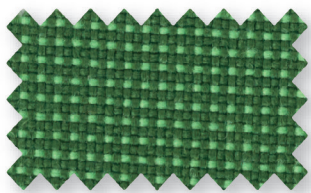
D2



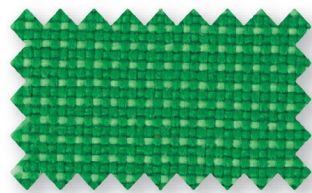
D3



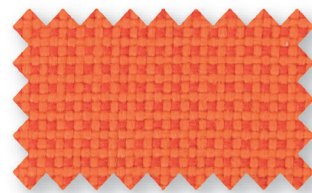
D4



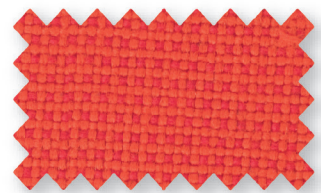
D5



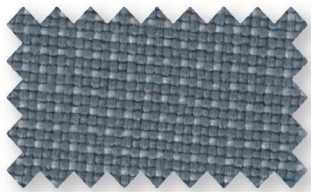
D6



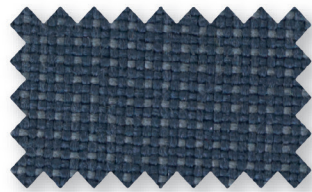
D8



D9



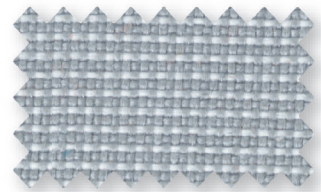
D10



D11



D12



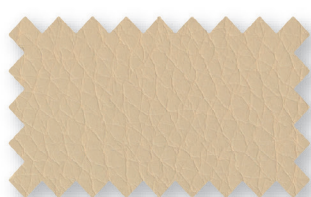
D13

muestrarios

Tapizados / Grupo 1 / Touch Leather



R1



R2



R3



R4



R5



R6

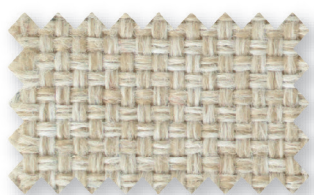


R7



R8

Tapizados / Grupo 1 / Combi



B1



B2



B3



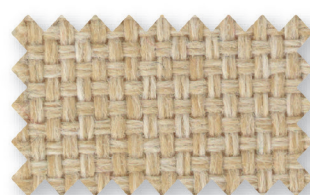
B4



B5



B6



B7



B8

Tapizados / Grupo 2 / Madison



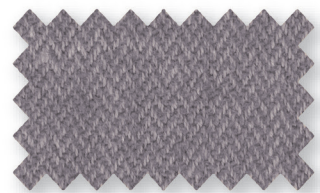
madison 1



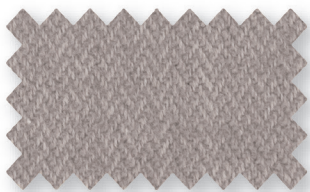
madison 2



madison 3



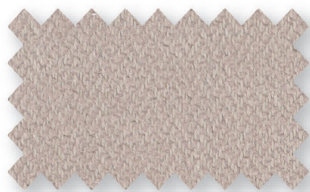
madison 4



madison 5



madison 6



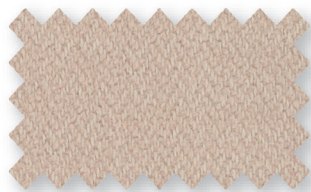
madison 7



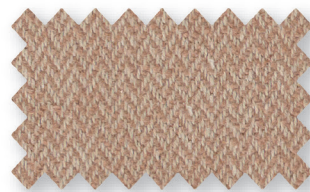
madison 8



madison 9



madison 10



madison 11



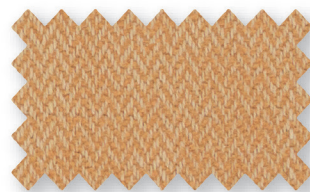
madison 12



madison 13



madison 14



madison 15



madison 16



madison 17



madison 18



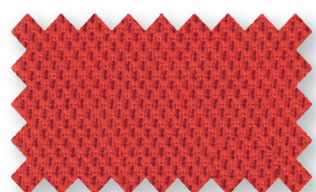
madison 19



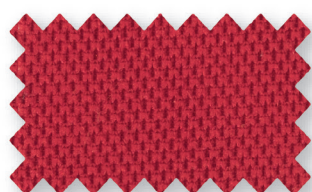
madison 20

muestrarios

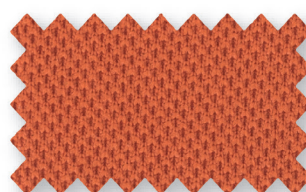
Tapizados / Grupo 2 / Ocean



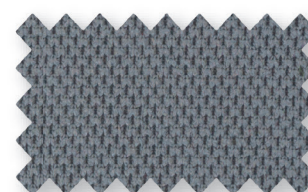
G1



G2



G3



G4



G5



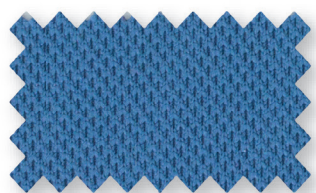
G6



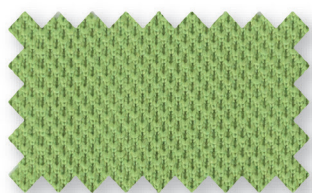
G7



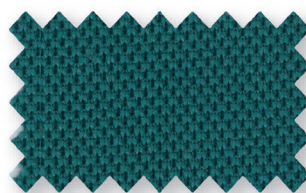
G8



G9



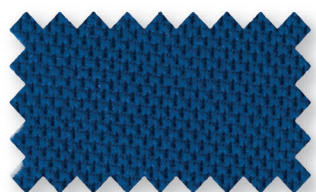
G10



G11



G12

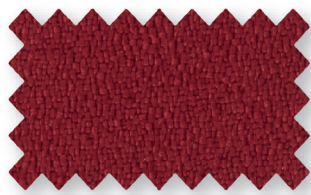


G13

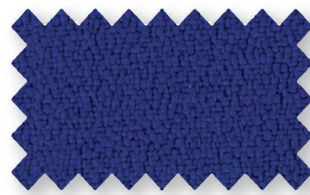
Tapizados / Grupo 2 / Elastika FR



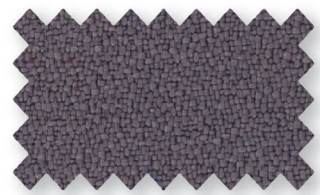
11



12



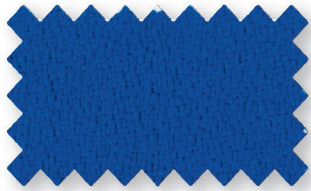
13



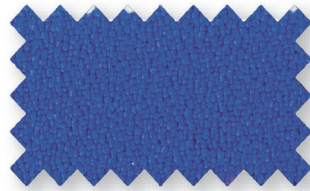
14



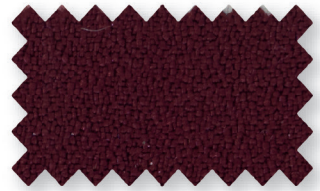
15



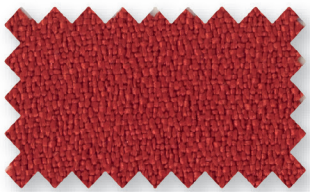
16



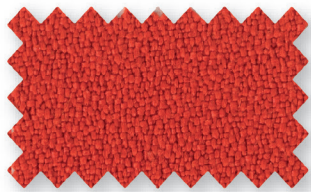
17



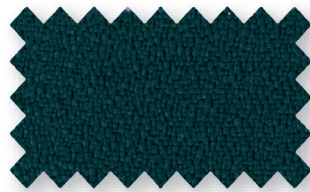
18



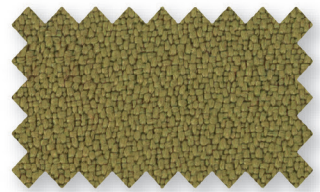
19



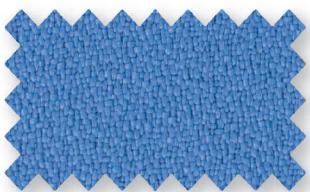
110



111



112



113



114

muestrarios

Tapizados / Grupo 2 / Oruga



01



02



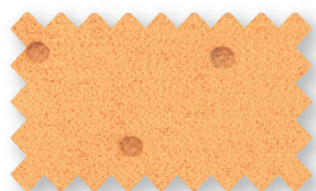
03



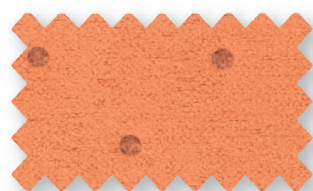
04



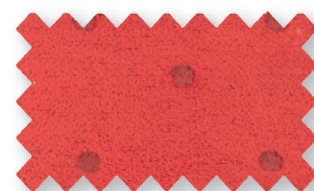
05



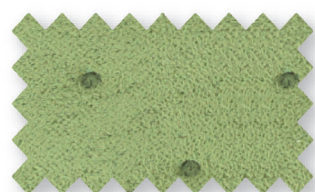
06



07



08



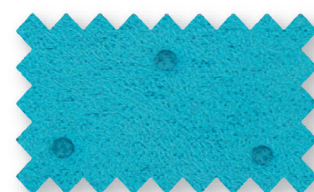
09



010



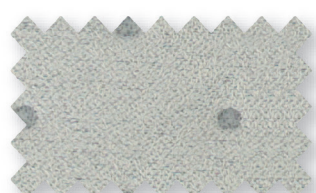
011



012



013



014



015



016

Tapizados / Grupo 2 / Nilo



NL1



NL2



NL3



NL4



NL5



NL6



NL7



NL8



NL9



NL10



NL11



NL12



NL13



NL14



NL15



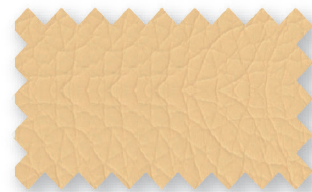
NL16



NL17



NL18



NL19



NL20



NL21



NL22



NL23



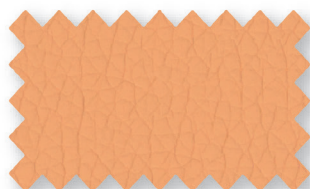
NL24

muestrarios

Tapizados / Grupo 2 / Nilo



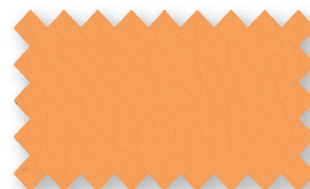
NL25



NL26



NL27



NL28



NL29



NL30



NL31



NL32



NL33



NL34



NL35



NL36



NL37



NL38



NL39



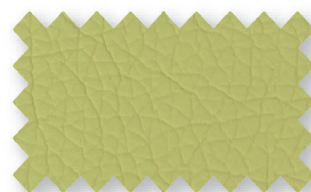
NL40



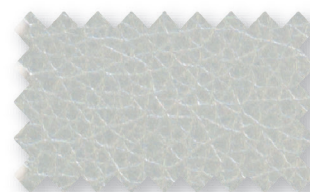
NL41



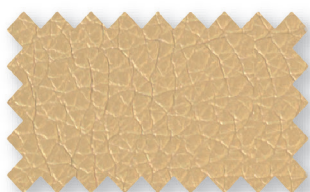
NL42



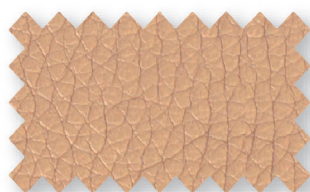
NL43



NL44



NL45



NL46

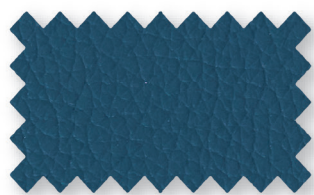


NL47

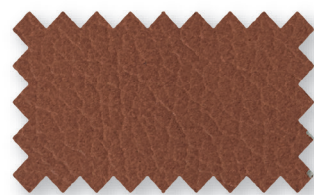
Tapizados / Grupo 4 / Piel



F1



F2



F3



F4



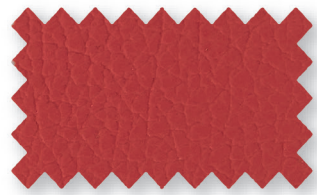
F5



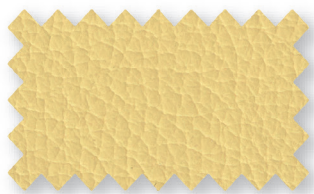
F6



F7



F8



F9



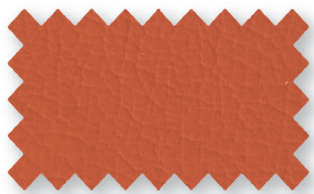
F14



F15



F18



F25

DILE THE ART OF SEATING

15 Aniversario



www.dileoffice.com

DILEOFFICE Showroom Madrid: C/ Marcelina, 6 28029 (Madrid)
DILEOFFICE S.L. Pol. Ind. II, Avda. de Valencia S/N, 03420 Castalla (Alicante) SPAIN

Tel. +34 965 561 177 | Fax. +34 965 560 672 | info@dileoffice.com

